



Newbold Parish Church 50p

The Evangelist

December 2019

Follow
The Star



www.newboldparishchurch.org.uk



www.facebook.com/newboldparishchurch

Annual Subscription £5.00



Newbold Parish Church Christmas 2019



Christingle Service

Sunday 15th December 4pm



Nativity Service

Sunday 22nd December 11am



Carols by Candlelight

Sunday 22nd December 6pm



Midnight Mass

Tuesday 24th December 11.30pm



Christmas Day Communion

Wednesday 25th December 9.30am

Dear all,

Christmas is on the horizon and one of the things I start to think about at this time of year is Christmas Carols.

I wonder if you have a favourite. Do you like particular tunes or particular words? Is there something that makes your Christmas?

For me there are definitely certain carols which define the festivities. There are certain carols that need to be sung around the Christmas period. My personal favourites are 'O come all ye faithful', 'Hark the herald angels sing' and 'Angels from the realms of glory'. I know some people are waiting for 'Silent night' or 'Away in a manger' for their Christmas to be complete.

I would say that often carols mean something to us because they are attached to memories, to feelings of excitement, to places and people we have been around at Christmas time.

Sometimes the carols we sing aren't really based on the Christmas story. Sometimes the words are a bit muddled up with traditions and celebrations from years gone by. Sometimes there are tunes which are brilliant but words which don't quite match up.

For example, 'We three Kings' has potential issues. Firstly, because there were more than likely more than three of them. The number three is assumed from the number of gifts, not the number of people. Secondly, they are not described as 'Kings' in the Bible. They are described as 'Magi', or wise men, that visit Jesus from the East. These pilgrims are star-gazers, interpreters of signs. So the carol speaks to our nativity plays but not necessarily to historical accuracy.

Also, one of my favourite carols, 'In the bleak mid-winter', begins with a problem. Although I love the tune, and most of the lyrics, this carol also, in the title and the first verse, begins with a description which is pretty much impossible when it comes to the nativity.

Let's look at the first verse:

*In the bleak mid-winter
Frosty wind made moan;
Earth stood hard as iron,
Water like a stone;
Snow had fallen, snow on snow,
Snow on snow,
In the bleak mid-winter
Long ago.*

The problem with this is that the Bible doesn't tell us the specific time of year that Jesus was born, and, even if it was winter, Bethlehem rarely has any snow fall due to it being in the desert. Temperatures certainly never get low enough for the earth to be 'hard as iron' or to have 'water like a stone'.

The carol is based on a poem entitled 'A Christmas Carol', by English poet Christina Rossetti, and was first published in January 1872. The poet obviously uses a lot of artistic license, based on the time of year we celebrate Christmas and the climate in this country, to set the scene.

However, if we can get past the historical inaccuracies, or artistic license depending on how you see it, of the first verse, the rest of the carol presents a rather humble view of the nativity. It is a view that I really appreciate as it speaks of the incarnation in a literal 'down to earth' way as well as celebrating the enormity of it.

The third verse holds together these themes well:

*Enough for Him, whom Cherubim
Worship night and day,
A breastful of milk
And a mangerful of hay;
Enough for Him, whom Angels
Fall down before,
The ox and ass and camel
Which adore.*

The final verse on the other hand challenges us with a classic conundrum:

*What can I give Him,
Poor as I am?
If I were a Shepherd
I would bring a lamb;
If I were a Wise Man
I would do my part,
Yet what I can I give Him,
Give my heart.*

When it says: 'What can I give Him?' it is a reminder that when faced with the glory of God our gifts, be they our time, our money, or our talents, can seem quite meagre. And yet we are called to give God everything we are.

The carol posits that if we were a Shepherd we would bring a lamb. This echoes the concept of sacrifice. We bring what we have, and who we are, to Jesus as we recognise who he is, and yet he is the one who is ultimately the 'sacrificial lamb'.

If we were a Wise Man, we would 'do our part'. This has echoes of the gifts the wise men bring to Jesus, but also of their role in taking the good news of Jesus' birth back to their homeland.

The final line is a pledge. We are called upon to give our heart, that is to give the most precious thing we have to Jesus.

The incarnation brings together the divine and the ordinary in an incredible way. Somehow the two coalesce in Jesus Christ. In a similar way, we are to allow the divine to enter into our 'ordinary' as we pledge ourselves to Christ. Here God makes our ordinary extraordinary.

During the Christmas season as we sing carols, I challenge you to pay close attention to what you are singing. To consider the difficulty of some of the lyrics, but also the potential impact of others. Because sometimes the words we sing carry a meaning far greater than we can imagine...

Happy Christmas!!

Ben

Walking Group

Steve Franks

Ten walkers gathered outside Church on the 3rd November before leaving in our cars for our starting point at Winster. We had checked the walk the previous Sunday, after Saturday rain saw flooding in Chesterfield and flood warnings issued in other parts of the Peak District. Then we had to drive through flood water to cross the River Derwent at Two Dales but this week there were no such problems before reaching Winster.

Winster was formally a centre for the lead mining industry and has a large number of listed buildings, including the Market House open daily as a National Trust information point. Mentioned in the Domesday Book its current population is just over 600.

After our sandwiches we started our walk, joining the Limestone Way. This long distance footpath runs for 46 miles from Castleton to Rocester in Staffordshire. This part of the path gave us far reaching views to our left towards Stanton Moor as we walked alongside fields with sheep and horses grazing and the call of a buzzard overhead. As we continued, the view down the Derwent valley opened up with Chatsworth House visible in the far distance and the Hunting Tower a speck on the hillside above.

Further along the undulating farmland we caught a glimpse of Riber Castle on the horizon in front of us. Built in the 19th Century as a residence for John Smedley, it has been the former site of a boys' school, a food store during World War Two, and later a nature reserve. Once derelict it is now being converted into apartments.

After crossing many fields, clambering over and squeezing through styles we turned onto Blakelow Lane. Leaving the Limestone Way, we continued along the stony lane, past old opencast workings on our left. Our walk was interrupted as three off road motorbikes sped past us kicking up small stones.

After turning onto Blakemere Lane we walked past Bonsall Motocross track. Motocross is a form of off-road motorcycle racing, there was no meeting taking place today.

After a coffee break we left the lane and started walking through fields, clambering over stiles once more and trying not to touch an electrified fence at one point. The skies started to darken and a few drops of rain fell, but we kept our fingers crossed that the rain would keep away. At one point we crossed through a field of cows with their calves, they watched us, we watched them but they were not too inquisitive. After climbing a grassy hill we were rewarded with more views over Stanton Moor before returning to the Limestone Way and retracing our way back to Winster.

By the side of the B5056 near to The Miners Standard inn we stopped to look at the best preserved Lead Ore House in the Peak District. It was used by local lead miners for keeping lead ore safe. The smaller mine owners 'banked' their lead by using the chute at the back to deposit the lead ore at any time and the roof is vaulted for additional security. Large doors at the front have been replaced by a grill so that the chute and vaulted interior can be seen.



Continuing down the road we reached our cars. Thankfully the rain had held off and the walk was not too muddy considering all the rain that had fallen recently.

The next walk on Sunday 1st December will be led by Eric and Helen in the Chatsworth area. New members are very welcome. We meet at the church gates at 12 noon with a packed lunch.

ST CHAD'S CHURCH HALL.

Eric Taylor shares his memories of St Chad's Mission from the early 1950s.

The church hall was built on Avenue Road in 1910, with the intention of building a church alongside to serve the community of Whittington Moor. The First World War and subsequent depression meant that the scheme never came to fruition, and in 1939 the hall was licensed as St Chad's Mission Church.

The building's interior consisted of a large hall with a stage at one end. On the left side of the stage a staircase led down to the basement in which the kitchens, toilets, boiler room, and storage space under the hall floor all existed. At the front of the building adjacent to the main hall the entrance, vestry, and storage rooms were situated. Outside, to the right of the hall was a football field on which the football club often played. The field was later sold off for housing development.

Regarding the hall, many functions were held there, including Christmas Parties for the parish. I recall one where the quiz master asked for a dog collar. After a short pause Father Moore realised and went rushing up to the stage taking off his collar! What a laugh. Everyone enjoyed it.



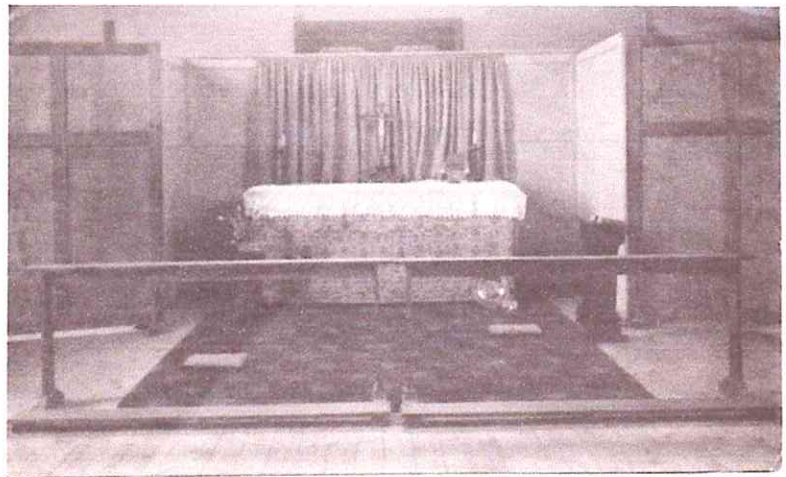
Dances were held from time to time for anyone to attend, including live bands. One such band, Lily Wigglesworth, and her players were often there.

Jumble sales often took place in the early '50s with entrance for a small fee. The jumble consisted of household goods, children's toys, and most of all clothing which everyone enjoyed because after the Second World War things were in very short supply so second-hand articles were a blessing.

The caretaker at the time was a lady called Mrs Herbert. She did a marvellous job of keeping the hall clean. She also ran the Mothers' Union of which my mother was a member and her daughter Marina played the harmonium for church services.

St Chads mission.

On Sunday morning, the altar was placed just inside the main hall for Holy Communion services being at 9am, followed by Sunday school later. Father Moore took services at that time with myself being server. Father Moore would come



down from St John's rectory every Sunday, at first on his bike. Later he acquired an Austin Seven, and latterly a Morris Minor with heater! I often went back with Father Moore to serve at St John's after serving at St Chad's.

Confirmation classes were held at St Chad's in the evening, in the room opposite the vestry. Father Tavernor, curate at that time took the ones which I attended and I was later to be confirmed at the parish church of Saint Mary and All Saints Chesterfield along with others from St John's.

Sister Hilary, from St Luke's nursing home at the top of Stand Road (served by sisters of the Society of St Margaret, East Grinstead) often attended the communion service at St. Chad's.

During the alterations to St John's no services were held there so for a time St Chad's mission was the alternative.

Every Sunday morning free buses were chartered by Father Moore to tour the parish and take the St John's congregation to St Chad's.

Christenings were also taking place there, one of which was Marian Bryan's son who was christened Andrew. The hall was also the storage place for the pipe organ.

On completion of the building work in 1957 the congregation returned to St John's. St Chad's carried on until closure in the late '50s/early '60s. I myself served at St John's after the closure of St Chad's.

The Hall was then used as a furniture store, and an electronic organ demonstration venue for Madin's for many years, later to become a playschool. Now it has been converted into four apartments.

Please pray for St Chad.

Eric Taylor

St Chad, one of the Northern Saints, succeeded his brother Cedd as Abbott of Lastingham in North Yorkshire. Later he was called by the Archbishop of Canterbury to be Bishop of Mercia. He established his episcopal seat in Lichfield where the Cathedral is dedicated to him.

When St John's church was built in 1857, Newbold was in the Lichfield Diocese. An early photograph of the Church shows wall paintings on either side of the east window (in the Lady Chapel), one of St Alban, the first British Martyr and a popular saint in Victorian times, the other of St Chad. Thus the name of St Chad has long been associated with Newbold Church.

Lichfield was a large diocese, and Newbold became part of Southwell Diocese when it was created in 1884. In 1927 Derby Diocese was created from part of Southwell Diocese which included Newbold. Four heraldic shields above the notice board in the entrance porch of the church show, in order from left to right, the symbols of the diocese of Lichfield, Southwell, the emblem of St John, and the symbol of Derby diocese.

OCTOBER CRAFT MEETING AND CRAFT FAIR

We were very pleased to see Maureen MacDonald again at the October meeting and hope that she will become a regular member. Ena brought along some bunting she had sewn from the fabric we have had donated before dashing off to keep another appointment. Although not a member of the group Anne Adams has taken some fabric home and has brought some completed bunting back to church saying she is quite happy to do some more.

We had to discuss the craft fair which was on November 2nd. We talked about what time we needed to arrive in order to set up our stall, what coins to have in the float and how we were going to display the bags. Once all that was done we were able to get on with the last minute finishing off of articles for the craft fair as well as cutting out bunting from fabric we had at home.

The day of the craft fair dawned dry if not that bright. We all got there at our allotted times and made the table as attractive as we could. At 9.30am the public began to come in. The footfall was evenly spread over the morning and early afternoon and many people stopped to look at our stall, commented on how attractive things were and the work that had gone into them but did not buy anything. However, thankfully, there were those who did buy though not as many as we would have liked.

At the end of the day we had £123 but a substantial part of this had come from sales I had made before the fair to a friend wanting Christmas presents for her work mates. We all felt we had not made enough to justify repeating the exercise.

However I did get asked about my Christmas tree decorations and I am planning to have a workshop next November to teach how to make them.

Christine Wieloch

NEWBOLD WOMEN'S GROUP

On 6th November we went for our annual meal out, which this year was to The Peacock at Cutthorpe. Twenty one members of the group enjoyed a delicious meal together, which made for a very sociable evening.



On Wednesday 4th December we will be holding our annual Carol Service in church at 7pm, followed by our Christmas Party in the Parish Room, when we will all be bringing refreshments. Any visitors to the Carol Service would be very welcome.

There will not be a meeting in January, as New Year's Day falls on a Wednesday.

*Trish Law, Committee Member
Tel: 450407*

THE MONDAY CLUB

2nd December	Social Afternoon in the Parish Room
9th	A meal out – To be arranged 12pm
16th	Christmas Party in the Parish Room 1 pm
23rd	No meeting
30th	No meeting

The first meeting of the New Year will be on Monday 6th January in the Parish Room at 1.45pm.

We wish all our members, the congregation of our church, and all readers of the Evangelist a Merry Christmas and a Happy New Year where the birth of Jesus is something to celebrate and we have time to be with family and friends.

.....

Elaine and family would like to say a warm Thankyou to everyone who sent cards, kind words of sympathy and support and donations for Dementia UK in memory of Elaine's mum, Dorothy Cooke. £200 was collected for Dementia UK which we know Dorothy would be really pleased with, in the hope it will help others.

A special Thankyou also goes to Ben and Rhoda for a lovely service, and to Rhoda for travelling with us for the internment of Mum's ashes.

Elaine, Dean. Emma and Matthew.



1-2-1 tuition

Specialising in adults swim tuition

Post – Op, rehabilitation exercise

Day Time Availability

All children, pre-school & with disabilities

Personalised tuition

Qualified experienced instructors

Fun and enjoyable lessons

Warm water (32°C)

Private pool

Hasland, Chesterfield, S41 0JN

01246 208995



**GEE VEE
TRAVEL**
37 St Mary's Gate
Chesterfield
S41 7TH
Tel: 01246
555002

UK & CONTINENTAL COACH HOLIDAYS
Free door to door taxi pick-up service (subject to area)
Please ring for your free brochure
Newbold Church's choice of Coach Company for the annual
Weekend Pilgrimage to the Shrine of Our Lady of Walsingham

CHAS. WIDDOWSON & SON
FUNERAL DIRECTORS

**A COMPLETE PROFESSIONAL SERVICE
WITH SYMPATHETIC PERSONAL ATTENTION**

**PRIVATE CHAPELS OF REST IN
SECLUDED GARDENS**

**33 HAZELHURST LANE
STONEGRAVELS, CHESTERFIELD
01246 273935 DAY OR NIGHT**

Pre Paid Funeral Plans

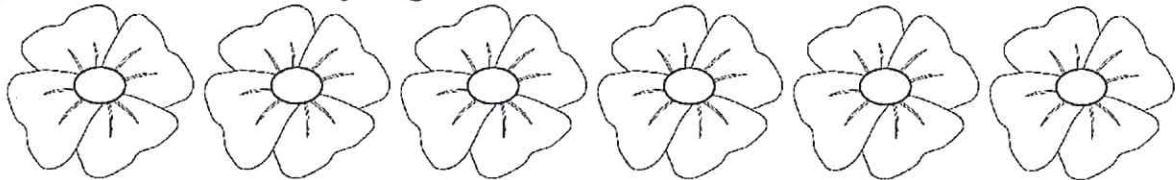


The 11 o'clock service



On Remembrance Sunday 10th November

Rhoda led our Service. The uniformed organisations attended bringing their standards to the front at the beginning. At the end of the service, they collected the Standards and led the procession to the War Memorial. Some took part in short readings. Rhoda used Jelly Babies in her talk and told us they were originally Peace Babies. We sang Make me a Channel of your Peace and My Lighthouse.



Please join us for our December services.

Sunday 8 (ADVENTures) and Sunday 22 (Nativity)

Please note our new Pattern of Worship from January 2020

First Sunday of the month Holy Communion at 11.00 a.m.

Second Sunday of the month Service of the Word at 11.00 a.m.

Third Sunday of the month Service of the Word at 11.00 a.m.

All services are informal and suitable for ages 0 – 100+

Everyone welcome and refreshments follow along with crafts/activities for children and the young at heart.

QUIZ

- 1 Which nationality is crime writer Jo Nesbo?
- 2 Which Australian actor played speech therapist Lionel Logue in the film 'The King's Speech'?
- 3 Headingly cricket ground is in which city?
- 4 Otology is the branch of medical science that deals with which part of the body?
- 5 The large Hadron Collider particle accelerator lies underneath the borders of which 2 countries?
- 6 In 2012, which city became the first in England to be named a UNESCO City of Literature?
- 7 How many beats to the bar does a traditional waltz have?
- 8 Which month follows the month containing St. Andrew's Day?
- 9 What was David Bowie's real surname?
- 10 What does the letter c enclosed in a circle stand for?
- 11 How many dots show on an iron to indicate 'warm'?
- 12 Was Michael Schumacher born in the 1960's or the 1970's?
- 13 Which Hollywood director is Drew Barrymore's godfather?
- 14 What is Elton John's middle name?
- 15 What type of confection is pastéis de nata?
- 16 In Morse Code which letter is represented by 4 dots?
- 17 Where in the world is the heaviest building?
- 18 What name is given to a young salmon in its first year?
- 19 Charles Lutwidge Dodgson, a distinguished mathematician and novelist, used the pen name of

And finally, for those who are old enough to remember

- 20 What was the pattern on Andy Pandy's suit?

Fothergills Hair

for all aspects of
hairdressing

Leyton House Colours

Milkshake products

39 West Bars

Tue 10 - 8pm

Chesterfield

Wed 9 - 4pm

S40 1AG

Thurs 9 - 4pm

Telephone 01246 209050

Friday 9 - 7pm

Sat 8 - 4pm

TO ADVERTISE in *The Evangelist* from January to December will cost only:

£30 for ¼ page £55 for ½ page £100 for full page

If advertising with us after January, the price will decrease accordingly. Contact Evelyn Lowe (details on the reverse of this magazine)

When using the businesses advertised in this issue, please mention that you saw their advert in *The Evangelist*.

Whilst we are pleased that people wish to advertise their businesses in our magazine, the publishing of an advert should not be taken as our approval of workmanship or professional ability.

Newbold Parish Church Pre-school



We welcome children from 2 years old to 5 years old



Our Pre-school has been based at The Eagle Club on St Johns Road for 50 years.

Our Pre-school offers:

- A friendly, warm and secure environment
- We specialise in special needs and believe in inclusion
- Our long serving staff are highly qualified and dedicated to helping all children develop and achieve.
- Different areas of learning.
- Healthy snacks & lunch club
- Safe and secure drop off area to the rear of the building.
- Affordable session prices
- Up to 15 hours a week free for 2, 3 & 4 year olds, and 30hrs for those who are entitled from September
- Parent & toddler group every Tuesday 9.00am – 11.00am
- Ofsted inspection overall mark Good in all areas

If you would like more information call in (no appointment needed) telephone us on 01246 451141 or email us at newboldparishchurchpre-school@hotmail.co.uk

Newbold Parish Church Pre-school, The Eagle Club, St Johns Road, Littlemoor, Chesterfield, Derbyshire, S41 8QN

CELEBRATING ADVENT

“And there shall come forth a rod out of the stem of Jesse, and a Branch shall grow out of his roots. (Isaiah 11:1)”

Later in the magazine Bishop Libby writes in ‘Our Diocese’ of decorating a Jesse Tree during Advent. Jesus was ‘of the house and lineage of David’ and depictions of the Tree of Jesse, tracing the genealogy of Jesus back to King David, the son of Jesse, are a feature in medieval art. Nowadays they are more familiar in stained glass windows and it is thought that the first Tree of Jesse in stained glass was commissioned for the Basilica of St Denis in Paris in 1145 and then the design spread into cathedrals and churches throughout Europe. Such windows, incorporating many figures mentioned in both the Old and New Testaments are very large and one of the most famous is in Chartres Cathedral. Many fine examples can be seen in this country including at Canterbury and York. The tree is depicted as a vine as Jesus is often referred to as the true vine and his followers as the branches.

The use of a Jesse Tree during Advent can be traced back to the twelfth century with a pictorial representation in the Lambeth Psalter dated around 1140 A.D. The Jesse Tree as a celebration of Advent can take many forms, but involves adding one decoration each day (unlike the chocolate Advent calendar where a chocolate is removed each day!) Each decoration represents a figure from the Old Testament whose stories tell of the foreshadowing of the coming of the Saviour Jesus Christ.

It is easy to find resources and ideas for a Jesse Tree. As well as devotional books with a picture for each day of Advent there are lists of the biblical figures with corresponding bible passages to read, prayers and reflections for each one, and printed designs to colour in for the decorations.

Rejoice, the Kingdom of God is near

CHRISTMAS THOUGHTS *Richard Peet*

The true meaning of Christmas sometimes is lost, as during this season many people are concentrating on shopping, cooking, buying and wrapping presents, the parties and celebrating with family and friends.

This season the greatest gift of all was born, JESUS CHRIST.

The gift of Jesus brings great joy to all who receive him. This time of Christmas is to share the gift so the whole world will know the love of our Saviour.

So during this Christmas season, help us to experience the story of the birth of Christ as if it was the first time we heard it.

Bring to our thoughts a sense of wonder and awe at what took place over two thousand years ago.

Help us to remember to live our lives proclaiming the loving message of that night in words and actions.

At this time may we love and be loved by all we meet as we enjoy the time to relax, having fun and laughter and remembering why this season of Christmas really exists.



Bible Study Fellowship Group

You are invited to come and join us for prayer, bible study, discussion and refreshments, in a relaxed setting in the **Parish Room** on

Tuesday 10 December Ephesians Chapter 4 verses 1-16

The room will be open from just after 7.00 p.m.

We begin at 7.30 p.m. and finish at 9.00 p.m.

No previous experience or knowledge needed. Church bibles are available (NRSV) although you are welcome to bring your own. There is no expectation to be able to commit to attend every session.

Everyone is most welcome.

Further details from Heather Peet, Chris Barnes, Steph Parkes.



Your word is a lamp to my feet and a light to my path

Psalm 119: 105

Kirkby Colliery Welfare Band

Christmas Concert
Saturday 14th December

7.30 pm

St John's Church, Newbold

S41 8QN

Tickets £7

including refreshments

Proceeds to be split between
Kirkby Colliery Welfare Band
and Newbold Building Project

For more information

Tel : 01246 557059

Lunch on Jesus

For the Homeless and those alone



Christmas Carols followed by Christmas
Dinner

25th December 2 - 6pm

at

Whittington Moor Methodist Church

Transport is available - please give your
address if needing a lift

Call MYDUDU to donate or volunteer
and to confirm attendance

On 07585554976



From the Registers

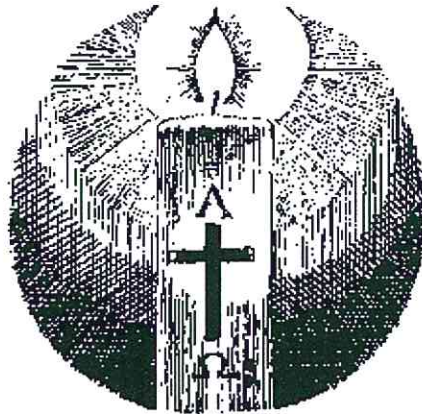
Funerals

12 Nov Kathleen Brough aged 95
13 Nov Catherine Nora Keep aged 94

Churchyard [burial or interment of ashes]

12 Nov Kathleen Brough
18 Nov Dorothy Fay Gould

May they rest in peace and rise in glory



Christmas is not as much about opening our presents as opening our hearts.

DIARY FOR DECEMBER 2019

1	S		First Sunday of Advent (S1)
		08.00	Mass
		09.30	Parish Mass
		12.00	Walking Group
2	M	13.45	Monday Club [PR]
		19.30	P.C.C. Meeting [PR]
3	T	09.15	Mass [PR]
4	W	09.30	Morning Prayer
		19.00	Newbold Women's Group Carol Service & Party
7	Sa	10.00	Coffee Morning [PR]
8	S		Second Sunday of Advent (S2)
		08.00	Mass
		09.30	Parish Mass
		11.00	11 O'Clock Service – 'Advent'ures
9	M	13.00	Monday Club [PR] – Christmas Buffet
10	T	09.15	Mass [PR]
		19.30	Fellowship Group [PR]
11	W	09.30	Morning Prayer
14	Sa	10.00	Making Christingles (PR)
		19.30	Kirkby Colliery Welfare Band Christmas Concert
15	S		Third Sunday of Advent (S3)
		08.00	Mass
		09.30	Parish Mass
		16.00	Christingle Service
16	M	13.00	Monday Club Christmas Party [PR]
17	T	09.15	Mass [PR]
18	W	09:15	Mass [Church School]
		09.30	Morning Prayer
19	Th	09.30	Dunston School Christingle Service
		11.00	Cavendish School Christmas Carol Concert

		18.00	Church School Juniors Christmas Carols	
20	F		Last Day of Church School Term	
21	Sa	09.00	Churchyard Morning (till 12.00)	
		10.30	Men's Group [PR]	
22	S		The Fourth Sunday of Advent (S4)	
		08.00	Mass	
		09.30	Parish Mass	
		11.00	11 O'Clock Service – Nativity	
		18.00	Carols by Candlelight	
24	T	09.15	Mass [PR]	Christmas Eve
		23.30	Midnight Mass	
25	W	09.30	Family Celebration with Holy Communion	
				Christmas Day
26	Th		Bank Holiday	
29	S		John the Evangelist – Patronal Festival (S5)	
		08.00	Mass	
		09.30	Parish Mass	

COFFEE MORNING

This month's Coffee Morning is on Saturday, December 7th 2019

10.00 until 12.00

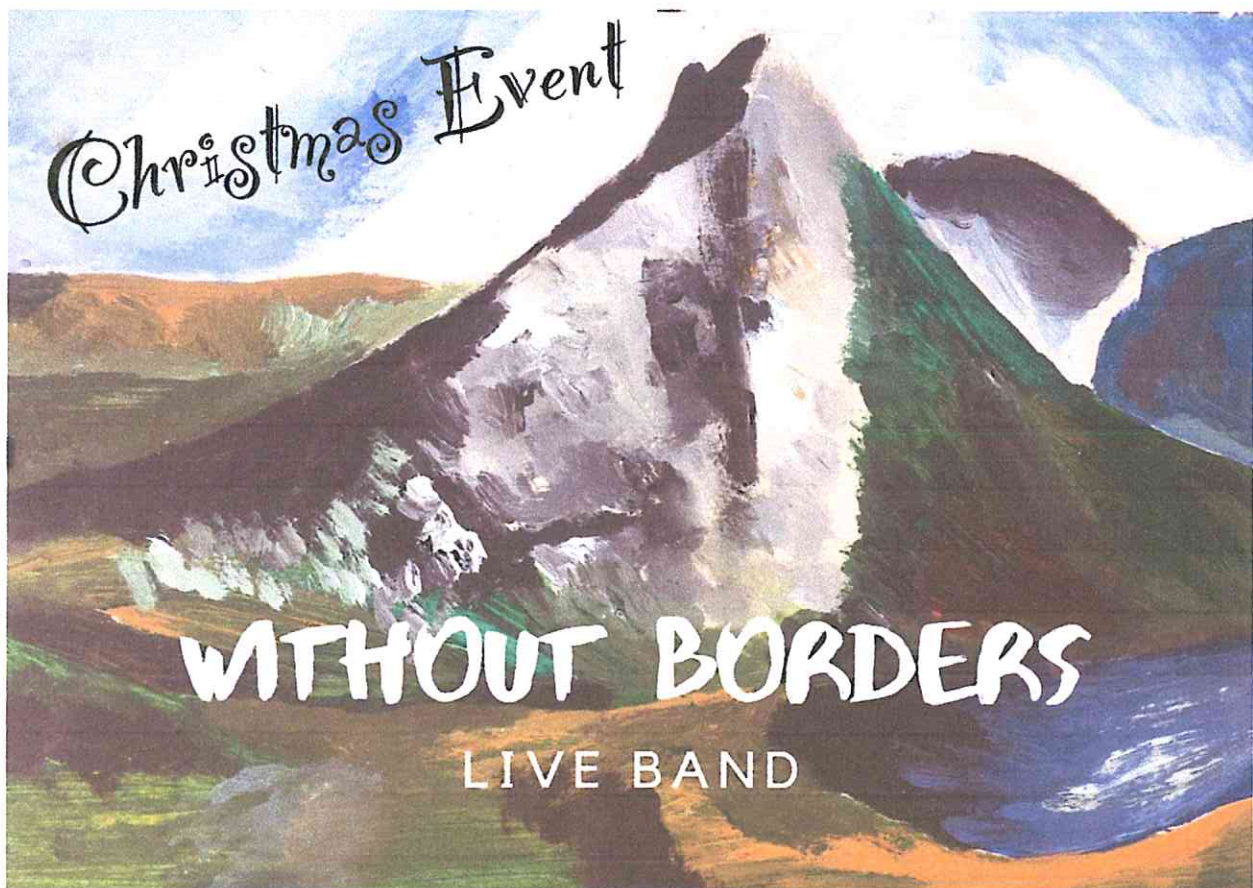
in the Parish Room

Please invite folks to come!

Everyone welcome

***Items for the January Magazine
to the editors by Sunday, 15th
December 2019, please.***

Peace on earth will come to stay, when we live Christmas every day.



On **Sunday 15th December, at 7pm**, Newbold Parish Church will play host to the **'Without Borders'** band who will be bringing their contemporary worship event to our church.

This will be an evening of Christmas Carols, and other songs, in a modern worship style. The band is made up of members from several different churches and they have led worship evenings in churches across Chesterfield, as well as in coffee shops and community spaces.

If you like rock, pop and contemporary music, this night will be a chance to sing carols with a twist!

The event is free and open to all. We hope that there will be people from a number of different churches joining us to worship together. Also, Ben, our Rector, will be playing his drums!

CHRISTMAS FAYRE

A number of people other than church members supported this year's Christmas Fayre. We had a number of stalls – Raffle, Tombola, Jams & Preserves, Homemade Cakes, Books & Allsorts, Crafts, Jewellery & Christmas Decorations, Lucky Stocking, Children's Tombola, and Personalised Baubles, In the Box, Guess the Coins, Pick a Card and Santa's Grotto.

The **Manna House Pop-Up Café** did a roaring trade preparing over 60 lunches in addition to numerous tasty savoury and delicious sweet items plus teas and coffees.

A big thank you to all who worked so hard producing crafts, home baking, Christmas decorations; to those who were generous with prizes for the tombola stalls and raffle. To all who bought and sold raffle tickets in addition to those who helped to publicise the event.

Thank you to Newbold Co-Operative Funeral Care for running a stall, to Sarah Mann Photography for providing families with a pictorial record of their child(ren)'s visit to Santa. Also to Brian at The Flag Shop for the posters, flyers and advertising on Facebook.

A huge thankyou to Adrian for baking for two days, in addition to making toasties; thanks also to those serving the refreshments and clearing away, to Steve and his team for preparing the church, and not least to Santa and his Elf who spent over five hours preparing the grotto.

Hayley Burrows still has some individual Christmas Cakes to sell at £3. Keep reading for winning numbers of raffle prizes.

Sales on Sunday added to the amounts on the next page. Cakes made an extra £18.00 and Refreshments made an extra £30.10. As we go to press the total stands at **£2223.58**

This is where the money came from

STALL	AMOUNT
Books & Allsorts	£91.71
Cakes	£235.10
Children's Tombola	£53.00
Coins in the Jar	£13.01
Crafts	£206.10
Donations	£105.00
In the Box	£74.01
Jams and Preserves	£148.00
Jewellery / Decorations	£159.50
Lucky Stocking	£32.00
Personal Baubles	£41.50
Pick a Card	£118.00
Raffle	£592.00
Refreshments	£315.35
Santa's Grotto	£46.00
Tombola	£123.20
TOTAL	£2,353.48
<u>Expenses paid out</u>	
Raffle ticket printing	£41.00
Raffle First Prize	£100
In the Box Prize	£37.00
TOTAL	£178.00
NET PROFIT	£2,175.48

PRIZE	WINNING TICKET	
--------------	-----------------------	--

	NUMBER	
£100 CASH	561 Sold by J&J Shaw	C
FOOD HAMPER	1262 Sold on the Day	C
CHRISTMAS CAKE	44 Sold by R. Blackwell	C
HAIRDRESSING VOUCHERS	1128 Sold on the Day	C
MARTEL BRANDY	352 Sold by L. Howard	C
BOTTLE PORT	684 Sold by R. Wheatcroft	C
TIN QUALITY STREET	824 Sold by D. Peet	C
BOTTLE WHISKEY	1135 Sold on the Day	C
BOTTLE SHERRY	592 Sold by C. Snell	C
CHOCOLATE PANETONNE	432 Sold by B. Malcolm	C
CHOCOLATE BISCUITS	1282 Sold on the Day	C
LETTER TO SANTA GIFT SET	478 Sold by S. North	C

GLORY TO GOD IN THE HIGHEST!

“But I’ve only just arrived!” I protested. Oh, that doesn’t matter,” came the reply, “the last shall be first and the first shall be last!” “It’s not whereabouts I am that worries me,” I said, “but the lack of rehearsals. How can I take part in the most important concert of my life if I don’t know what pieces you’re going to sing?” Gabriel giggled. It was a most wonderful giggle, something akin to a Mozart trill. “Don’t worry,” he said, “God will give you the words and the music. Now just pop along to cloud 9 to join the rest of the choir.”

Well, this certainly wasn’t what I was expecting. To say I was apprehensive was putting it mildly, but I duly floated along to the assembly point as directed. WOW! What a sight! Enough angels to fill the Proact stadium 100 times over! Row upon row of them as far as the eye could see, shining with a light so intense that I wondered where I’d left my sunglasses. Now I really knew what it meant to be “gob-smacked.” I was standing there trying to take all this in, when I became aware of someone at my elbow. “Magnificent isn’t it?” said an angel with a husky voice. “You new?” she continued. “Yes,” I mumbled, still transfixed by the vision in front of me. “Come with me then,” she said, “we’re nearly ready to go.”

My heart fluttered in anticipation as we slipped into place at the end of one of the rows nearest to us. My new-found friend turned to me and said, “Do you know, on earth I was tone-deaf and Virginia there, was mute. I always wanted to be able to sing, and now I can.” At one time, if you’d told me that I’d be doing a concert sandwiched between a mute and someone who was tone-deaf, I’d have been horrified, but somehow it didn’t seem important now. All I felt was a terrific sense of peace and tranquillity as we burst through the clouds to illuminate the night sky over Bethlehem. The fields were a

patchwork quilt below us, dotted with sheep-pens and several shuddering shepherds, shielding their eyes from the piercing brilliance of our presence. You couldn't help but feel sorry for them, huddled there; knees knocking, jaws gaping, and probably wetting themselves with fear. I just wanted to reach out and touch them and tell them that the most wonderful thing was happening, when suddenly, this glorious sound rang out – "Glory to God in the Highest, and on earth, peace, goodwill to all men."

And there it was, coming out of my mouth too. I don't know who was the more amazed – me, or the shepherds! And what heavenly harmony too, better even than Handel! Who needs to be afraid when God's in charge?

Hilary Barnes

Let Everyday Be Christmas Norman W Brooks

Christmas is forever, not for just one day,
For loving, sharing, giving are not to put away,
Like bells and lights and tinsel, in some box upon a shelf.
The good you do for others is good you do yourself.

ANSWERS TO THE QUIZ

1 Norwegian 2 Geoffrey Rush 3 Leeds 4 Ear 5 France & Switzerland 6 Norwich 7 Three 8 December 9 Jones 10 Copyright 11 Two 12 1960's 13 Steven Spielberg 14 Hercules 15 Portuguese custard tarts 16 H 17 Bucharest – The Palace of Parliament is the heaviest on the planet containing 7000,000 tonnes of steel & bronze, a million square feet of marble, 3500 tonnes of crystal and 900,00 square metres of wood 18 Fry 19 Lewis Carroll 20 Blue stripes

CHRISTMAS – A TIME FOR LIVING

A time for joy and for giving,
A time for happiness and peace;
Trouble, strife and fighting to cease.
Christmas is a time for living,

So what is Christmas all about?
Who was the baby that was born
On that cold, dark winter's night,
By shepherds visited at dawn?

Long was the journey to Bethlehem,
And no room at the inn for them
Only a stable for Mary to give birth
To her child, God's gift from Heaven to earth.

He was the only Son of God;
God manifest in the flesh.
Born King of kings and Lord of lords,
Holy in his righteousness.

His palace was a cattle shed,
A manger his royal cradle bed.
The star above, the crown he wore,
Heralded by the angel choir.

He came to save us from our sin,
To take our guilt, give peace within;
To tell of God's love and bountiful store
Of grace and mercy to love him more.

His royal carriage was a donkey;
The word of God, his bread from Heaven;
Righteousness his robe of authority
O'er all the earth of his creation.

Holiness was the sceptre he bore;
In sandals of peace, his patience he wore.
The sword of the Spirit, his hand held high,
As to the cross he went to die.

He came to give us second birth,
Salvation from sin that fills the earth;
To cleanse our hearts he shed his blood,
Taking our place on Calvary's cross.

Accept Jesus Christ your Salvation
To break the chains of sin.
He'll make of you a new creation
Emmanuel, God with us, and within.

Mabel Street 2007

Music on Christmas morning Anne Bronte

Music I love, but never strain,
Could kindle raptures so divine;
So grief assuage, so conquer pain
And rouse this pensive heart of mine. –
As that we hear on Christmas morn
Upon the wintry breezes born.

Though Darkness still her empire keep
And hours must pass, ere morning break
From troubled dreams, or slumbers deep
That music kindly bids us wake.
It calls us with an angel's voice
To wake and worship and rejoice.

Stephen Toon Hearing Care

Do you suffer from excessive ear wax ?

Have it removed in the comfort of your own home by a qualified Audiologist, using the latest equipment and techniques

One Ear £40*

Both Ears £60*

*Home visits normally £20 extra. Special offer for magazine readers

Need Hearing Aids?

I promise you will be delighted by;

How they look

How they feel

How well you hear

How much they cost

For a free assessment or information call **01246 766912**

The best hearing aids, the best aftercare, and
The best prices.

Tel: **01246 766912** www.stephentoan.org

HELP WITH FUNERAL ARRANGEMENTS

From advice on how to register a death
to making all the arrangements,
we're here 24 hours a day

CROWDER & ALDERSON

FUNERAL DIRECTORS

01246 452344

Whitting Valley Rd, Chesterfield
S41 9EY

Part of Dignity Ltd. A British Company

M.W. LANE & SON

JOINER & BUILDING CONTRACTOR

Est. over 25 years

Expert Quality Craftsmen

Extensions & Loft Conversions / New Roofs & Maintenance

All types of Joinery / Property Repairs / Alterations

English Heritage Registered Builders

Full Public Liability Insurance

Wood View
Main Road
Cutthorpe S42 7AG



01246 557956 or 07801 609949

J.B. PROPERTY MAINTENANCE

Odd Jobs

General Handyman Services

Garden Services

Property Maintenance

Fully Insured

Contact Jeffrey Bennett on
0790 251 9214

jb-propertymaintenance@outlook.com

MARK CHABOWSKI



GENERAL
BUILDING
SERVICES



TEL: 01246 235373
MOB: 07973 962947

SKILLED TRADESMAN OFFERING
A COMPREHENSIVE RANGE
OF BUILDING SERVICES

The Meaning behind the 12 Days of Christmas

This song had its origins as a teaching tool to instruct young people in the meaning and content of the Christian faith. Each of the items in the song represents something of religious significance. The hidden meaning of each gift was designed to help young Christians learn their faith. The song goes, "On the first day of Christmas my true love gave to me..."

The "true love" represents God and the "me" who receives these presents is the Christian. Here you go:

The "partridge in a pear tree" was Jesus Christ who died on a tree as a gift from God.

The "two turtle doves" were the Old and New Testaments - another gift from God.

The "three French hens" were faith, hope and love - the three gifts of the Spirit that abide (I Corinthians 13).

The "four calling birds" were the four Gospels, which sing the song of salvation through Jesus Christ.

The "five golden rings" were the first five books of the Bible also called the "Books of Moses".

The "six geese a-laying" were the six days of creation.

The "seven swans a swimming" were the "seven gifts of the Holy Spirit". (I Corinthians 12:8-11; Romans 12, Ephesians 4; I Peter 4:10-11).

The "eight maids a milking" were the eight beatitudes.

The "nine ladies dancing" were nine fruits of the Holy Spirit. (Galatians 5:22 & 23)

The "ten lords a-leaping" were the Ten Commandments.

The "eleven pipers piping" were the eleven faithful disciples.

The "twelve drummers drumming" were the twelve points of the Apostles' Creed.

The next time you hear "The 12 Days of Christmas", consider how this otherwise non-religious sounding song had its origins in the Christian faith.

A Message from Christians Together for Chesterfield

Two new Syrian refugee families are arriving in Chesterfield soon, one in South Derbyshire and one in Matlock. We will be providing practical support.

Both families have young children, girls aged 4, 3, and 2, plus boys of 12 months and 3 months.

PLEASE through your network of friends and family, could you donate clothes and toys. Also we are asking for TVs, blenders and deep fat fryers! Financial donations are also needed.

We can collect so please contact

Jeanne Robinson 07919486101

ctfc2018@gmail.com

A PRAYER FOR THE HOMELESS

God of compassion,
your love for humanity was revealed in Jesus
whose earthly life began in the poverty of a stable and ended in the
pain and isolation of the cross:

We hold before you those who are homeless and cold
especially in this bitter winter.

Draw near and comfort them in spirit
and bless

those who work to provide them with shelter, food and friendship.

We ask this in Jesus' name.

Amen

FOOD BANK

The foodbank has told us that the following items are in short supply and would be particularly welcome:

UHT milk, juice, small jars of coffee, canned tomatoes and
canned meat. Items can be donated at your local supermarket
or placed in the box in church.

INDEPENDENT FUNERAL DIRECTORS FOR SIX GENERATIONS

B. Hattersley & Sons Ltd

For Personal, Reliable and Professional Funeral Service

TELEPHONE 232820 AT ANY TIME

Offices and Private Chapels of Rest

211 CHATSWORTH ROAD, CHESTERFIELD

(Also resident at 104 Longedge Lane, Wingerworth)

Andrew Hattersley, BA, Dip FD David Hattersley, BA, Dip FD

The Eagle Club
Littlemoor, Newbold



supported by
the coalfields
regeneration trust

Number of rooms to hire
and kitchen facilities, for
parties and social events.

Disabled access and toilet.

**We offer a number of different
activities:**


East Midlands Jiu Jitsu Association
British Martial Arts Academy
Parent and Toddler Group

Drama Class
Fitness Class
Jumble Sales
Pre-School

£15.00 per hour
Contact Angela
Tel: 01246 206025

Newbold bedrooms

**TRUSTED
TRADER**

 **DERBYSHIRE**
County Council
Improving life for local people

Newbold bedrooms is your local fitted bedroom specialist. A family business established 25 years ago.

Call us

-

01246 222194

Email us

-

enquiries@newboldbedrooms.co.uk

Website

-

www.newboldbedrooms.co.uk

Visit us

-

36 St. Mary's Gate
Chesterfield
S41 7TH

Opening hours –
Monday – Saturday
12 - 3pm

Trusted Trader reviews

-

"We had excellent service from beginning to end. There was attention to detail in everything. We have used Newbold Bedrooms before and we are very happy to recommend them."

-

A very friendly and professional service. Their quality of workmanship/products and respect for customers property is excellent.

-

"Service from beginning to end was professional. Fitting was completed on time, with good attention to detail. Felt confident with this company working in my home."

Funeralcare



Here for you

Our caring and professional team is here to guide and advise you 24 hours a day, 7 days a week.

We're here when it matters most

Our services also extend to:

- Pre-paid funeral plans
- Memorial masonry
- Floral tributes

Newbold Funeralcare

276 Newbold Road, Chesterfield S41 7AJ

01246 211 041

coop.co.uk/funeralcare

THE EVANGELIST

The editors would like to thank all the advertisers who support the magazine, and all our contributors, both regular and occasional ones. We hope that you, our readers have enjoyed the magazine this year and will continue to support it in 2020.

MAGAZINE SUBSCRIPTION RENEWAL

A reminder to all magazine subscribers that the annual subscription becomes due on 1 January 2020, the amount remaining the same at £5 for the year, or fifty pence per copy.

Regular distributors will receive the usual reminder notice, together with the attachment for returning to me with the collected sum and details of subscriber numbers.

Individuals can pay their £5 subscription direct to me, for recording and onward transmission to the Church Treasurer.

With thanks to all who subscribe to the magazine.

Trish Law

Observant visitors to the churchyard in late October would have seen this large 'fairy ring' of fungi almost hidden beneath the fallen leaves.



200 CLUB

The Club winners for September 2019 were as follows:-

First prize	(£33)	Carol Snell	(Number 4)
Second prize	(£16)	Chris Witham	(Number 131)
Third prize	(£6)	John Marlow	(Number 9)

The Club winners for October 2019 were as follows:-

First prize	(£33)	Victoria Cable	(Number 94)
Second prize	(£16)	Kath Barber	(Number 39)
Third prize	(£6)	Adrian Blanksby	(Number 128)

New members are always welcome. Please contact either Richard Peet (Tel. 520697) or Stephen Hewitt (Tel. 275225) for more information.

The next draw will be held on Sunday 24th November 2019

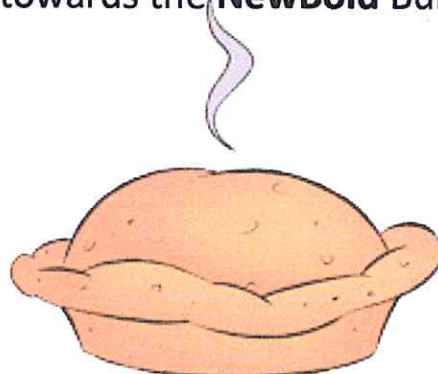
Quiz Night in January

Stuart and Ann Adams invite you to join them for a fundraising quiz night on Monday 20th January 7.00 pm in the Parish Room.

Pie and peas will be served. Dietary requirements can be organised on request.

Tickets will be on sale at the end of December from Ann and Julie at £7.00 per ticket.

All proceeds will go towards the **NewBold** Building Project.



THE HARVEST SUPPER

The Bishop's Harvest Appeal, this year, is to help the Diocese of Manicaland in Zimbabwe by providing finance to buy bricks, cement and roofing sheets to build new homes for their community, devastated by Cyclone Idai earlier this year. It costs £900 to build a home and it is the bishop's intention that enough money will be raised in Derby Diocese to build 20 of these.

Our Harvest Supper raised £90 for this venture and thanks go to Lesley Howard for arranging the delivery of meat and potato pies and mushy peas which were gratefully received by a line of hungry people in the parish room. Thanks also to Richard Peet for the evening's entertainment of two quizzes which got our grey cells working overtime.

The retiring collection raised a further £82 for the Bishop's Appeal so a total of £172 will be sent off by David, our treasurer.

£52 was raised in church for **The Royal British Legion**

FUNDRAISING FOR THE BUILDING PROJECT

The Quiz Night held in October raised the wonderful sum of £297.50.

A table was hired at St. Thomas' Church on a very wet Saturday of November to sell items made by Christine and Bev and members of the Craft Group. The competition was stiff as there were many tables of professionally made craftwork and photography but because of items sold by Christine before the event, £123 was raised for our cause.

The total raised so far stands at £38749.00

Fundraising is going really well and finances for the project are looking good.

At the moment, plans for the new building are posted on nearby lamp posts prior to the council giving planning permission. Once

permission is granted our architects will produce the relevant tender documents. These costings will then enable us to put the financial package together which will mean that a faculty can be sought and in turn that building work can begin.

JAMS & CHUTNEY

Ruth has the following jams and Chutney for sale at £2 per jar, they can be delivered. See her in church or RING 450797 to order.

CHUTNEY - Plum, Spicy squash, Beetroot, Gooseberry.

JAM - Red Currant Jelly, Plum, Raspberry, Gooseberry, Blackcurrant, Mixed Fruit, BlackBerry.

All the proceeds will go to the **NEWBOLD** Building Project.

SAVE THE DATE – Saturday 21 MARCH 2020

A musical evening with the local talented musician/songwriter, Adam McCullough. Adam does cover versions from all decades in addition to some of his own material.

It promises to be a good evening entertaining all generations. All details will be finalised by the February Evangelist (if not before).

WANTED

Heather Peet will accept any unwanted Christmas Presents to use on a stall at the fete. Dated goods (e.g. biscuits/chocolates) would be useful at other fundraising events e.g. coffee mornings/quizzes/concerts.

Discretion assured either bring to church in January or ask Heather to collect.

Our Diocese

December 2019

Diocese
of Derby
THE CHURCH
OF ENGLAND

www.derby.anglican.org

@DioceseofDerby

The Rt Revd Libby Lane, Bishop of Derby writes...



December always feels a bit frantic to me. And this year the unusual timing of a General Election only adds to that. Whatever else we might think of this election, perhaps its timing during Advent will encourage us to take a wider perspective and longer view.

We try to make Advent visible in our household: we decorate the house, but gently (we change decoration on Christmas Eve in celebration); each Sunday we light a candle on an Advent wreath; we put up the traditional pine or spruce, but until Christmas Eve it is a Jesse Tree, softly lit, hung daily with simple olive wood images depicting salvation history through the stories of God's people in the Bible. These are outward reminders to us that the season of Advent is not simply a countdown to turkey and tinsel.

It's not that I think we just ought to replace one kind of outward display with another more pious. And I'm not a grinch. I enjoy the hospitality of the run up to Christmas. I admire the ways people find time and resource to focus on family and friends – I'm not very good at present finding, but my (now grown up) children have the knack of identifying often small, inexpensive or home-made gifts that are just right and show an attentiveness that's not just turned on for Christmas. These things can also be outward reminders of important and precious things – of love and hope and desire.

And Advent should be full of desire: 'come, Lord Jesus ... even so, come'.

That desire is, I think, wonderfully subversive. This season, if taken seriously, strips away all self-reliance. If we allow it to, the eternal hopeful themes of the season can reveal the lack of substance in the relentless consumerism of the public face of the approach to Christmas – and this year, perhaps, undercut the hubris of political manoeuvring.

Amid all the noise and activity of December, Advent is the thundering silence of God, putting all our striving to shame, reminding us that we cannot save ourselves nor, in the end, hide from God.

Advent offers a perspective that reverses and upturns the views we too easily accept. It takes courage to journey through Advent. There is no hiding, no wrapping the truth up with ribbon and baubles, or indeed with election promises and campaign spending.

The extraordinary, outrageous mercy of Advent is the discovery that, as we yearn for Christ's coming – in both humility and glory – we discover that God has always risked trusting the outworking of salvation to the stuff of creation and to human flesh.

'Annunciation' by Bishop Stephen Cottrell

***There is only one thing that prevents
The gentle movement, heaven into earth:
Not the fear that godly greeting brings,
Nor cold presumption (God could never speak),
Nor empty tomb, nor barren heart,
Nor eyes searching, voices how long blaze,
Nor the silence where there should be praise,
Nor the bitter taste of human failing:
But the lack of trust that what was promised
Might in human flesh be born, achieved,
How happy she who for us all believed,
Strength of God in human weakness blending,
Tenderly the humble servant lifted,
From foetal cry the fatal mending.***

+ Libby Derby

The Rt Revd Libby Lane
Bishop of Derby

Derby Churches Nightshelter

Working with an army of volunteers, the nightshelter provides safe accomodation and a substantial meal for up to 35 guests each night during the coldest months of the year (December - March).

Seven churches in or near the city centre provide a welcoming venue, each opening their doors for one night each week .

As guests bed down for the night in new, warm sleeping bags and blankets, night staff are there to offer support and prayer throughout the night.

Before leaving at 8am the next morning, guests tuck into a healthy breakfast of cereals, toast and fresh fruit. Many are given ongoing support to address their needs.

It costs £137,000 every year to run a winter nightshelter. To donate please visit: www.derbycitymission.org.uk

Nightshelter locations:

Monday:

Derby Cathedral, DE1 3GP

Tuesday:

Hope Centre, Curzon St, DE1 1LL

Wednesday:

Peartree Baptist Church,
154 Peartree Road, DE23 6QD

Thursday:

Ashbourne Rd Church,
DE22 3AG

Friday:

New Life Church, Normanton Rd,
DE23 6UU

Saturday:

Ozzy Road Baptist Church,
Charnwood St, DE1 2GU

Sunday:

St Mary's Church Hall,
Darley Lane, DE1 3AX



Pupils raise £242.85 for Harvest Appeal

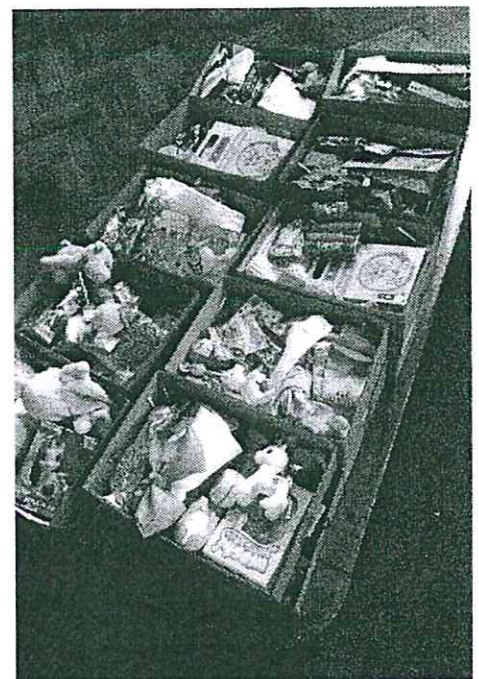
Pupils at St Peter's C of E Primary School in Netherseal have been doing their bit for the Bishop of Derby's Harvest Appeal, raising £242.85 through various table-top sales. After the teachers shared details of the appeal, a Year 6 pupil asked if they could do something practical to help - and the Save Zimbabwe Sale was born.

Headteacher Melanie Machell said: "The children worked extremely hard and organised everything! They designed posters, bought 'stock' for their stalls, wrote letters to businesses for donations, baked cakes, designed games and collected from parents. It was fabulous that the children felt so empowered to make a difference and we are very proud of their achievement."

The 70 pupils at St Peter's also spent time discussing the plight of the people of Manicaland and praying for them. Read more on www.derby.anglican.org

Church fills 255 Christmas shoeboxes for Romanian children

Volunteers at St Andrew's church, Langley Mill spent Saturday 9 November filling and wrapping an amazing 255 shoeboxes with Christmas gifts for children in Romania. The boxes are then sent to their partner church in Poiana where they are distributed to local children. Many thanks to the generous donors who provide gifts and cover the transport costs and, of course, all those who help pack the boxes each year.





Christmas events around the Diocese

Toy service

St John the Baptist, Tibshelf
1 December - 11am

WI Carol Service

St John the Evangelist, Hazlewood
1 December - 2.30pm

All Age Christingle

St Michael, Pleasley
1 December - 3pm

Advent Carol Service

St John the Evangelist, Derby
1 December - 4.30pm

Advent Carols by Candlelight

St John, Buxton
1 December - 6pm

Advent Carol Service

St Mary & St Laurence, Bolsover
1 December - 6pm

New Opera Company Derby

Concert "Winter Warmers"
St Philip, Chaddesden
4 December - 7.30pm
£8 on door or 01332 701886

Christmas Tree Festival

All Saints, Turnditch
5 to 8 December - 10am : 4pm
(Sunday 12pm - 4pm)

Christmas Tree Festival

St John the Evangelist, Derby
6 to 9 December

Christmas Tree Festival

St Thomas, Brampton
6 to 10 December - 10.30am :
7pm (Sunday 1.30pm - 5pm)

Christmas Fayre

Findern Village Hall
7 December - 10am - 12 noon

Christmas Craft Market

St Thomas, Brampton
7 December - 10am : 1.30pm

Christmas Festival

St Bartholomew, Elvaston
7 December (10.30am - 5pm)
8 December (11.30am - 5pm)

Derventio Choir Christmas Tree Festival

St John the Evangelist, Derby
7 December - 7.30pm

Christmas Fair

Christ Church, Burbage
7 December - 10am : 2pm

Carol Service of Hope and Thanksgiving

St John the Evangelist, Hazlewood
8 December - 3 pm

Christingle

St Matthew, Morley
8 December - 3pm

Beer and Carols Evening

Holy Trinity, Milford
8 December - 6.30pm

Christmas Tree Festival

St Peter and St Paul, Eckington
10 - 15 December
Open 10-12 Dec: 10am - 3pm,
13 Dec: 3pm - 6pm, 14 Dec:
10am - 6pm, 15 Dec: 11am - 4pm

Folk Carols and Readings

St Mary the Virgin, Buxton
11 December - 7.30pm

Wathall's Memorial Service

Derby Cathedral
12 December - 6.30pm

Christmas Tree Festival

St Paul, Quarndon
13 to 15 December - times vary.
Visit stpaulsquarndon.org.uk

Christmas Tree Festival

St Peter, Littleover
14 to 16 December

Carol Service & switching on o Memorial Lights

Christ Church, Burbage
15 December - 9.30am

Christingle Service

St John the Evangelist, Hazelwo
15 December - 11am

Carol Service

St Matthew, Morley
15 December - 11.15am

Candlelit Carol Service

St Peter, Littleover
15 December - 6pm

Nativity Play and Carols

St Bartholomew, Elvaston
15 December - 6.30pm

Carol Service

St Laurence, Shottle
15 December - 7 pm

Christmas Tree Festival

Christ Church, Burbage
16 December - 2pm : 4pm

Scrouge A Ghostly Tale for Christmas

St Lawrence, Barlow
18 & 20 December - 7 pm
Tickets £5 - email julie.ferreday@icloud.com

Christmas Carol Service

All Saints, Curbar
20 December - 6pm

Music Evening with Sarah Hind

Holy Trinity, Milford
20 December - 8 pm : 10 pm

Choral Morning Prayer

St Bartholomew, Elvaston
15 December - 10.30am

Carol Service

St Swithun, Belper
19 December - 7.30pm

Christmas Tree Festival
St Philip, Chaddesden
21 December (10am - 4pm) and
22 December (12 noon - 4pm)

Carol Service (joint with St
James, Harpur Hill)
Harpur Hill Methodist Church
Sun, 22 December - 10.30am

**Burbage Band Christmas
Concert**
Christ Church, Burbage
22 December - 2pm

Carol Service
St John the Evangelist,
Hazelwood
22 December - 3pm

Carol Service
Christ Church, King Sterndale
22 December - 3.45pm

**Festival of Nine Lessons and
Carols**
St John, Buxton
22 December - 6pm

Carols by Candlelight
St Peter, Belper
22 December - 6.30pm

Family Carol Service
St Philip, Chaddesden
22 December - 6.30pm

Carol Service
St Michael, Holbrook
22 December - 6.30 pm

Carol Service
St Mark, Openwoodgate
22 December - 6.30pm

Crib Service
Holy Trinity, Milford
24 December - 2 pm

Crib Service
St Matthew, Morley
24 December - 3pm

**Handbell Ringers and Crib
Service**
Christ Church, Burbage
24 December - 4pm

Crib Service
St Mary the Virgin, Buxton
24 December - 4pm

Crib Service
St James, Harpur Hill
24 December - 4pm

Crib Service
St Mark, Openwoodgate
24 December - 4pm

Children's Nativity Service
St John the Baptist, Tideswell
24 December - 4pm

Christingle Service
St Peter, Belper
24 December - 6pm

Christmas Eve Carol Service
St John the Evangelist, Derby
24 December - 6.30pm

**Carol Singing in the Nags Head
Garden**
St Michael, Pleasley
24 December - 7pm

**More information can be found
at derby.anglican.org/events**

**Details of Midnight Mass and
Christmas Day services are
available on
www.achurchnearyou.com**

Learning in Faith

Our 2020 course programme is now open for bookings

The new 2020 Learning in Faith course programme, 'Pray, Learn, Tell and Serve Together', is now available. All PCC secretaries should have received a copy and booklets for every church will be distributed with the December edition of Together Magazine.

There is a huge array of courses on offer - from familiar favourites, such as 'Talking Faith for Ordinary People' and Vocations Exploration sessions, to brand new sessions on 'Instagram' and 'Twitter', and 'Unexpected Child in the Church Area', to name but a few.

Booking a place is easy - visit www.derby.anglican.org/training or call 01332 388687.

As well as attending sessions yourself, please add Learning in Faith 2020 to your PCC agenda and take the opportunity to discuss what is on offer and how the courses may support your own church to pray, learn, tell and serve together.

In her introduction, Bishop Libby says 'Taking part in this programme is one way to be fed and nourished by Christ'.

The Learning in Faith team wish you a Happy Christmas and look forward to seeing you in 2020.

The church of St. John the Evangelist thank Dunston Garden Centre for kindly donating a magnificent Christmas tree once again. The Rector, the churchwardens and the congregation wish your staff a very happy Christmas and a prosperous New Year.

